



# ENERTECH

## ENERTECH CAMERAS

### CAM - 300



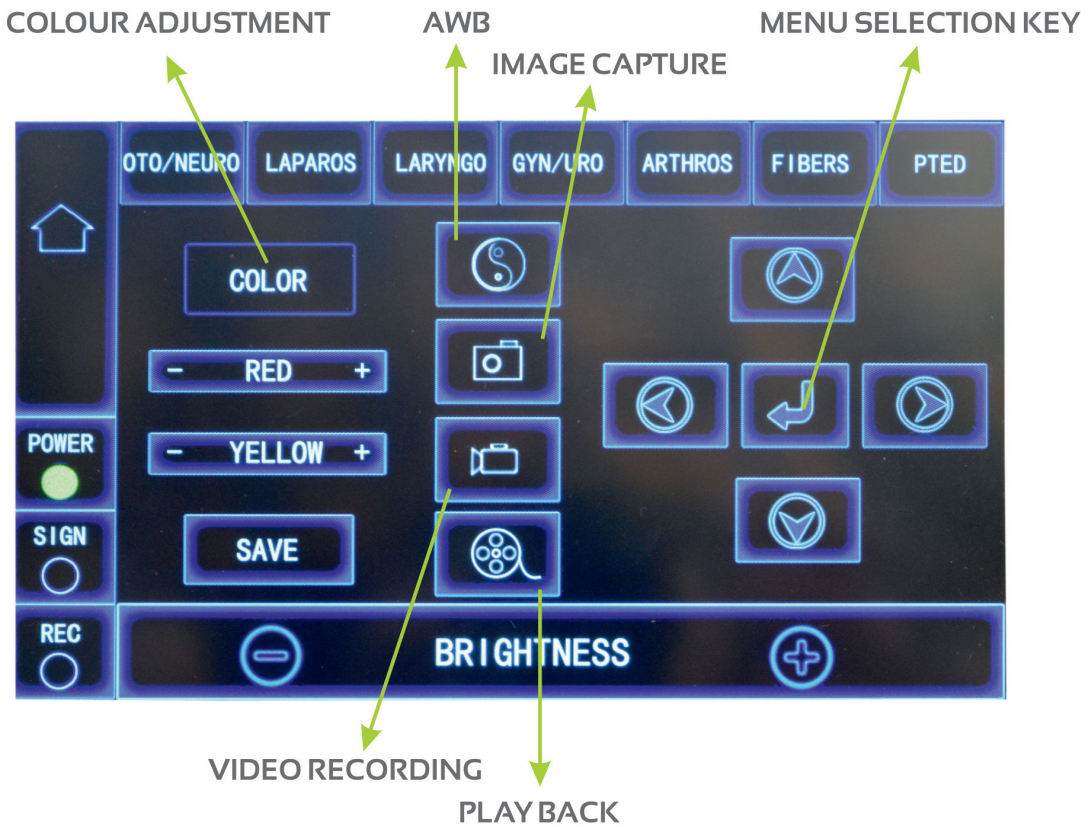
### Cam - 300 Specification :

Image Sensor	1 / 1.8"
Frame Rate	60 FPS @ 1080 P
Sensor Resolution	2.4 megapixel 1080 P
Focal Length of lens	18 mm - 28 mm
Gain Control (AGC)	Yes
Brightness Control	0-20 Steps (Adjust According to light source intensity)
Settings	On Screen Display (OSD)
No. of Buttons on Head	Four (W.B., Freeze, Brightness increase & Decrease)
Out put	HDMI, DVI, CVBS, SDI out
Sharpness Adjustment	Yes
Antie Morie	Yes
White Balance	PUSH LOCK
Camera Cable Length	3 Meter Ultra Soft Silicon Cable
Power Cable Length	2.5 Meter
Supported Endoscope	Rigid Endoscope / Flexible Endoscope
Supported Light Source	Works Best with LED Light Source
Power	230 V. A.C.
Dimension	W.H.D. 350mm 140mm 350mm
Weight	5.5 Kg.
Recording Resolution	1080P Full HD @ 60FpS.
Snap Short Resolution	1920 X 1080 Pixels
Recording Mode	Via USB, Pen Drive
Digital Zoom	IX - 10X

Cam 300 :

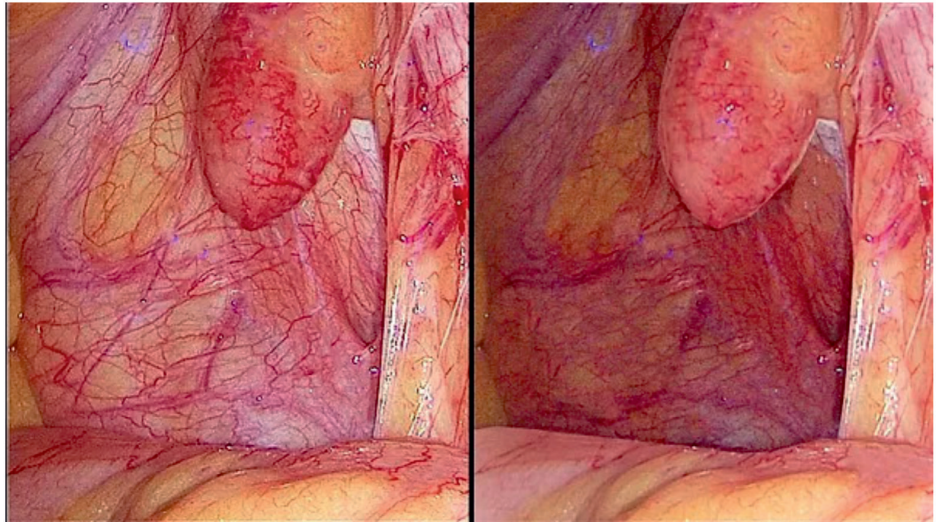


Multi-Speciality Software Suit :



## EXCLUSIVE FEATURES OF ENERTECH CAMERAS

### Bigger, Wider CMOS 1/1.8" Sensor In All Full HD Cameras :

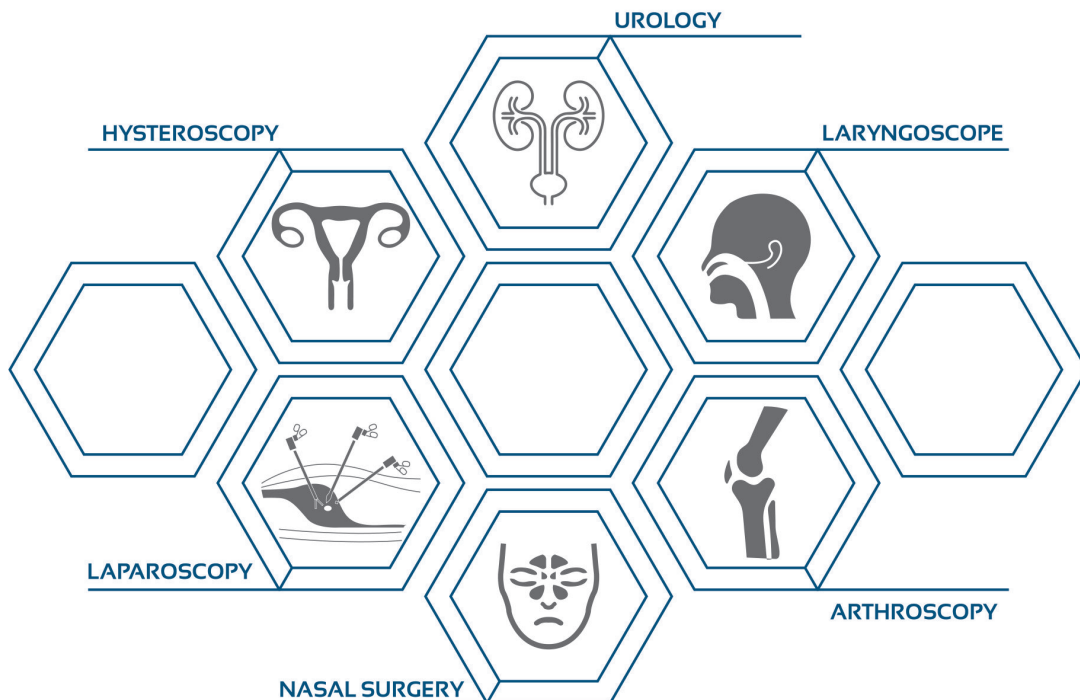


**Bigger 1/1.8" Sensor**  
 - Better details even in the deeper areas  
 - Brighter and Noise-free Images  
 - Rich and accurate colours

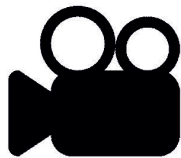
**Smaller 1/2.8" Sensor**  
 - Loss of details in the deeper areas  
 - Darker Image with noise  
 - Inability for colour differentiation.

### Multi-Speciality Modes For Different Types Of Surgeries :

Different types of surgeries and applications can be selected from the camera menus



## Video Recording And Image Capture By USB Port :



Video Recording



Image Capture

Available at:

**XAVIER Med Pvt. Ltd.**

1-10-51/2, Road 6B, Dwarakapuram,  
Dilsukhnagar, Hyderabad - 500060

[www.buyxavier.com](http://www.buyxavier.com)

Customer Care: 8008895680,

Service: 8008895079