

MEDISTER : STEAM STERILIZER

When
time is
LIFE
& every
second
counts!



Redefining Hospital Infection Control

Sterile & 100% Compliant Everytime



Reliable



Robust



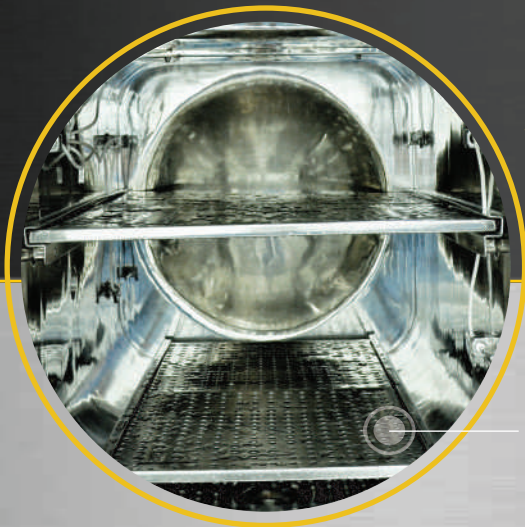
Safe

As a healthcare professional, you play a pivotal role in infection control in your healthcare facility, you need cutting edge technology which depends on the highest standards of quality, reliability and efficiency.

We understand this need and through innovative engineering, offer you products that have been designed not only with components of the highest quality and sturdy mechanisms, but also ensure that our equipments are easy and fast to service and maintain.

MEDISTER - Steam Sterilizers

- Meets international standards.
- Customized chamber design for variable loads.
- Standard cycles to offer you maximum flexibility.
- Microprocessor based automatic controls for precise and reliable operation.
- Intuitive touch screen display.
- Strong after sales support for minimum downtime.



The Chamber

Look inside the chamber, you will see the heart of the system & will be immediately exposed to the technology that Machinfabrik can offer for effective and safe sterilization.

- Equipment designed and built to comply with pressure equipment codes of American Society of Mechanical Engineers and Pressure Equipment Directives of EU.
- Corrosion resistant SS316L stainless steel chambers and doors.
- Fully jacketed design for best drying results and less condensation.
- High heat transfer jacket design. No cold spots for perfect sterilization.
- Thermal insulation for energy efficient operation and cautionary safety labels for your safety.
- Minimum weld joints for long chamber life.

Unique design eliminates stress points which build up in the 90 degree bends. Round corners and cylindrical shape promotes uniform pressure distribution for longer life.

The Door

The door of a Steam Sterilizer is one of the most critical & expensive component of the equipment.

The Medister Series is provided with automatic sliding doors. These doors are precisely crafted for smooth opening and closing operation and ensure zero operator intervention for safe and hassle free operation.



Doors are provided with high temperature resistant single piece silicone seals for long life and all safety features to safeguard the operator and equipment.

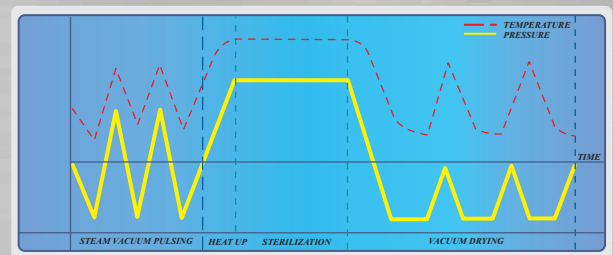
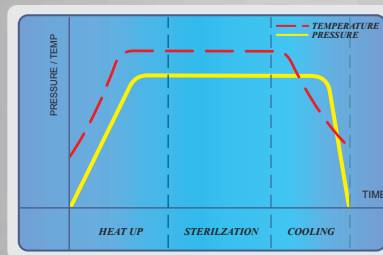
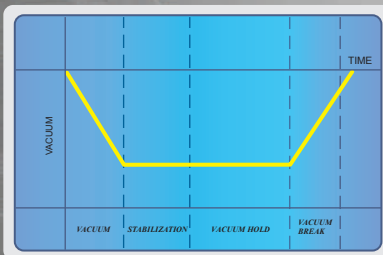
Intuitive Process Management

Maximize your advantage with Machinfabrik's sophisticated and user friendly PLC based control system which offers you a precise combination of pulsing, temperature and pressure control, accompanied with speed and drying.

- 5.7" multi-color touch panel for easy operation and informative displays.
- 3 level password for secure operation.
- F_0 control software.
- Data printer for comprehensive batch documents as per international norms.
- Real time clock for seamless synchronization of date and time.
- Precise temperature control with an accuracy of $\pm 0.01^\circ\text{C}$.



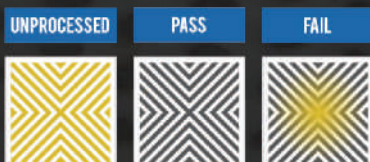
Cycle Programs



Test Programs

Vacuum Leak Test
Used to verify the integrity of the chamber under vacuum.

Bowie & Dick Test
To check the effectiveness of the system to remove air and ability of steam to uniformly penetrate.



Working Programs



Liquid Program

To sterilize liquids, like disinfectants in glass containers and is provided with a special slow exhaust phase.



Garment Program

For sterilization of garments / linen packs with high air removal and drying functions.



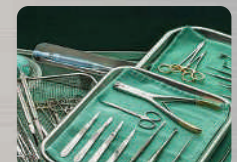
Rubber / Synthetic Material Program

For effective sterilization of Rubber / Synthetic Material with good drying.



Instrument Program

This program focuses on good air removal, rapid and effective drying.



Better Design. Better Performance.



Piping

Stainless steel, non-corrosive piping with inert gas welding for zero microbial contamination.



Vacuum System

High vacuum pump with mechanical seal for best air removal, which is so important for effective sterilization. Optionally "Go Green" systems for environment protection can be offered.

Valves

Hygienic design for best sterility. Specially constructed for high pressure and vacuum duty for unmatched safety and performance.



0.2 μ Bacteria Retentive Filters

0.2 μ filters ensures clean air intake after sterilization to safeguard the sterile integrity of your load.



Bio Seal

100% separation of your clean and semi-clean zone helps you to maintain a high cleanliness class in your sterile store.

Safety Valves

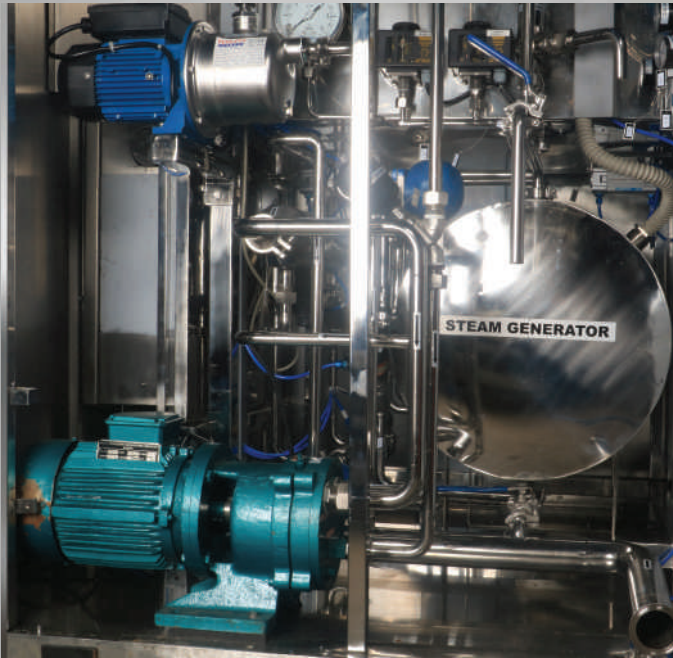
Precise and reliable over-pressure protection with safety valves. Valves are accompanied with government-approved documentation.



Temperature and Pressure Sensor

Electronic, high response temperature and pressure sensors with very high accuracy of $\pm 0.10^{\circ}\text{C}$ and $\pm 0.002 \text{ kg/cm}$ is used for accurate and precise processing.

Clean Steam Generator



Electrically heated Steam Generator that can self generate steam. This means your sterilizer is independent and can rapidly start the minute you want to sterilize a load.

Built from stainless steel piping and fittings to produce steam which is free of harmful contaminants that may damage your sterilizer and your load.

Separate injection of steam in the jacket and chamber ensures best steam quality for effective processing.

Ergonomic & Flexible Handling Systems

Loading systems are designed keeping in focus the safety and convenience of the operator, efficiency of the sterilization and drying process and to maximize space utilization.

- Stainless steel pull out trays for fast and flexible loading.
- Quick Loading Carts and Floor Trolleys.

The Loading Carts are designed to roll from the Floor Trolley onto the chamber for easy handling of heavy loads. The Loading Carts have special locks to prevent accidental movement. The Floor Trolleys have swivel wheels to allow you to manoeuvre the trolley in limited spaces as well.



Safe And Gentle Processing

Safety of our customers is our highest priority and all our equipments are designed and built to guarantee the highest standards during both operation and maintenance.



Over pressure safety with electronic and mechanical protection devices.



Quick access emergency stop push buttons.



Safety features for the doors.

- Doors will not open when the chamber is pressurized.
- Process will not start unless the doors are closed.
- Door on clean side will not open unless the sterilization cycle is successfully completed.
- Both doors will not open simultaneously.
- Obstruction safety for sliding doors with auto push back action.
- Easily visible door status indicators.



Proper Electrical Grounding.



Short Circuit Protection.



Heater Protection Against Low Water Levels.



Thermally Insulated Hot Surfaces With Cautionary Labels.

Partners You Can Trust!

A system out of action is a big problem. Our team responds to such situations to provide prompt and effective on-site effective service. Our qualified service engineers are on location for understanding your needs.

We offer a variety of flexible, cost effective service contracts with guaranteed short response times to minimize your down time. A wide range of spare parts is always ready for quick delivery. Our total commitment to support means that whenever and wherever you need us, we will be there.



MEDISTER : STEAM STERILIZER

CHAMBER SIZE : (W x H x D) mm	600 X 600 X 900	600 X 600 X 1200	750 X 750 X 1000	750 X 750 X 1200	750 X 750 X 1500
CHAMBER VOLUME (L)	325	430	560	670	840
MODEL	325-DA-I-PLUS	430-DA-I-PLUS	560-DA-I-PLUS	670-DA-I-PLUS	840-DA-I-PLUS
OVERALL DIMENSIONS : (W x H x D) mm	1450 X 2275 X 1350	1450 X 2275 X 1650	1600 X 2450 X 1550	1600 X 2450 X 1750	1600 X 2450 X 2050
CHAMBER / DOOR / PIPING / STEAM GENERATOR : SS 316 L	✓	✓	✓	✓	✓
JACKET: SS 304	✓	✓	✓	✓	✓
SAFETY FOR : CHAMBER / JACKET / STEAM GENERATOR / DOOR	✓	✓	✓	✓	✓
WORKING TEMPERATURE : 121°C / 134°C	✓	✓	✓	✓	✓
UTILITY REQUIREMENTS					
RO WATER (3.0Kg / Cm. ²)	20 Liters / Cycle	28 Liters / Cycle	43 Liters / Cycle	54 Liters / Cycle	54 Liters / Cycle
SOFT WATER (1.2 Kg / Cm. ²)	105 Liters / Cycle	105 Liters / Cycle	105 Liters / Cycle	105 Liters / Cycle	105 Liters / Cycle
COMPRESSED AIR (7.0 Bar)	0.2 M ³ / Min	0.2 M ³ / Min	0.2 M ³ / Min	0.2 M ³ / Min	0.2 M ³ / Min
ELECTRICITY: 415V / 50Hz / 3Phase / AC Supply	18 KW & 3.5HP	24 KW & 3.5HP	30 KW & 3.5HP	36 KW & 3.5HP	36 KW & 3.5HP
FLOOR DRAIN : 4 "Dia	✓	✓	✓	✓	✓
WATER SAVING SYSTEM: With Chilled Water	Optional	Optional	Optional	Optional	Optional
STANDARDS & NORMS					
ASME Section VIII Div-1	✓	✓	✓	✓	✓
EN-285	✓	✓	✓	✓	✓
CE Compliant	✓	✓	✓	✓	✓
AUTOMATIC OPERATION-DOUBLE VERTICAL SLIDING DOORS FOR ALL MODELS					
SHELF / ONE CARRIAGE + TWO TROLLEY	SHELF	1 CARRIAGE + 2 TROLLEY	1 CARRIAGE + 2 TROLLEY	1 CARRIAGE + 2 TROLLEY	1 CARRIAGE + 2 TROLLEY
PLC + HMI + PRINTER + MANUAL BACK-UP	✓	✓	✓	✓	✓

