

Hydraulic C-Arm OT Table

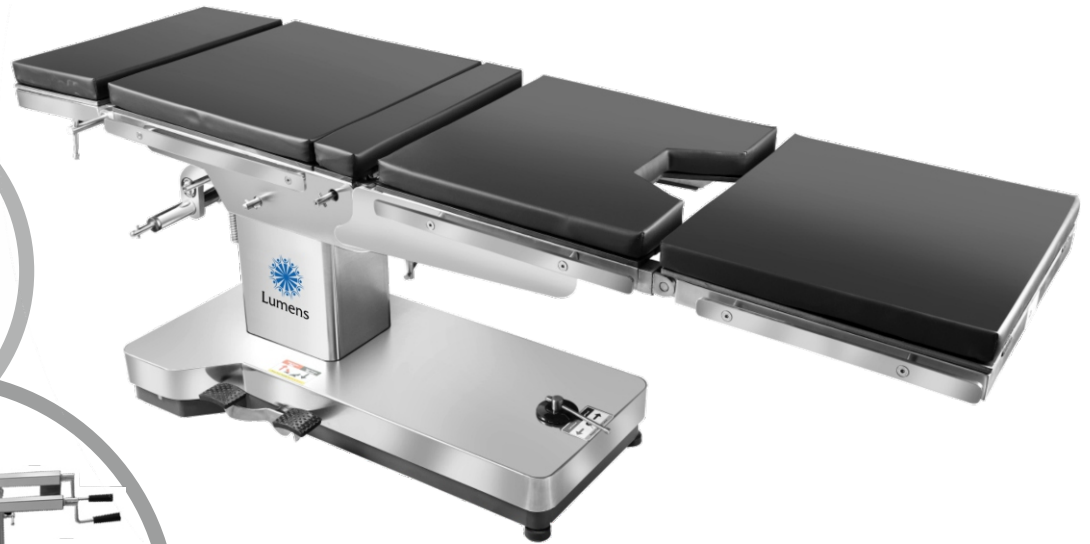
For Orthopedic, Gynaec & General Surgeries



Lumens Medical Pvt. Ltd.
Life Enhancing Technology

An ISO 9001, ISO-13485, CE, ISO-1400 Certified Company

Model: LM-OT1



**Horse Shoe
Neuro Attachments**



Ortho Attachments

Features:

- Hydraulic and Mechanical operated.
- The base is eccentric for trouble-free C-Arm movements.
- Eccentric pillars, Stainless fitting.
- LEG and HEAD SECTION are detachable and interchangeable.
- Inbuilt Kidney Bridge.
- Detachable head, leg and pelvic section.
- Base and cover made of attractive, easy to clean stainless steel.
- Sophisticated mechanism provides smooth, step less articulation of the table top for precise patient positioning.
- Five sectional radio-translucent.

Technical Specifications:

- Top Dimension: L 1980mm x W 530mm
- Height Adjustment: 760mm -1000 mm
- Trendelenburg/ Reverse: 30°/ 25°
- Lateral Tilt: 20°/ 20°
- Kidney Elevator: 130mm
- Back Rest (up/ down): 80°/ 25°
- Leg Rest (up/ down): 10°/ 90°
- Head Rest (up/ down): 45°/ 90°
- Patient Weight Capacity: 200 Kgs



Lumens Medical Pvt. Ltd.
Life Enhancing Technology

An ISO 9001, ISO - 13485, CE, WHO cGMP ISO -1400 Certified Company

2-24-113/3/B/NR, 1st Floor, Laxmi Narayana Nagar, Uppal, Hyderabad - 500039

Ph: 9849466520, 7997192056

