



Electro-Manual
Operation Theater Tables

Astra Series



Innovately Designed Practical Applications

Profile

We Meditech (India) started our journey way back in the year 1996 to manufacture OT Room Equipment such as Operation Table, Operation Light and Examination Lamp. We are the pioneer, leading Manufacturer & Exporter of best quality products. Meditech (India) is an ISO 9001:2015, ENISO 13485:2012, OHSAS 18001:2007 and CE Certified Company.

At Meditech, we have a team of over 50 personnel and over 10 service engineers to give our customers 100% satisfaction both pre sale and post sale. We have a dedicated quality assurance department headed by a team of quality control experts to ensure flawless delivery of products. To ensure the requisite quality standard, there is a dedicated quality assurance department check each product to ensure utmost efficiency before delivery.

By optimizing and enhancing our commenced capabilities, we envision to be recognized as one of the most trusted organization in the industry. We always try to cater the exact requirements with all our product range and ensure to exceed the expectations of our clients.

We do projects across the country with most of the customers giving us repeat orders. We have been supplying our products to more than 24 countries in the world and looking forward to reaching every corner of the world.

Our facility is fully equipped with all the advanced machines that completely assist us in completing all the required responsibilities which includes material sourcing, marketing and distribution, exporting, importing business networking and many more. Being a client centric company, Meditech (India) supplies a qualitative range of medical products to a vast clientele spreading worldwide. This in turn helps us in gaining a global patronage. In working with the product supply chain we have developed our distributors in every corner of the globe. This is being supported by well-built logistic team to ensure on time delivery.

Our business policy is to provide our customers with the best quality, cost, prompt delivery, pre sale and post sale service which enables our customers to promote their business further.



Astra 103+



An antibacterial conductive decompressed mattress protects against bedsores that may occur during a long operation, and facilitates cleaning after an operation.



Manual Override as secondary power source for operations in case of electrical operation failure.

Standard Features



Three sectional back plate with detachable shoulder rests for shoulder surgery.



Fully detachable head supports. Head rest with ball joint clamp for precise patient positioning.

Optional Attachments

Electro Manual Multipurpose OT Table with Dual Operations specialize for Cardiology, Bariatric, Orthopaedic, Neurology, Laparoscopy, Urology, OB/Gynae Procedures with the addition of table accessories





Equipped with a large translucent longitudinal/sliding top 300mm providing more accessibility of C-ARM functions without patient reversing.



Extendable table top width 100mm for Obesity Patients

Technical Constraints

Top dimension	L1980 x W 533 mm
Height adjustment with pad	750 mm - 1050 mm
Longitudinal/ Sliding Top (optional)	300 mm
Trendelenburg / Rev. Trend.	30° / 25°
Lateral tilt left / right	20° / 20°
Kidney elevator	150 mm
Back rest (upward / downward)	80° / 25°
Leg rest (upward / downward)	15° / 90°
Head rest (upward / downward)	25° / 90°
Power supply	24V DC
Battery backup (optional)	3 hours
Patient weight capacity	300 Kgs (666 lbs)



Features

- Electro Manual drives with noiseless, jerkless and smooth positioning.
- Table positions i.e. Height adjustment, Trendelenburg, Reverse Trendelenburg, Lateral Tilt, Back Section/Chair Position, Flex-Reflex, Longitudinal Top are controlled by dual operations i.e. Corded Handset & Manual Override with graphical icons.
- Zero Position to make table neutral by simply pressing '0' positioning button.
- Safety key to block motor system in critical operations.
- Table top is divided into 5 sections providing numerous articulation possibilities.
- Radiolucent table top with C-ARM & X-RAY compatibility.
- Integrated weight compensation by manual adjustment of the head and leg sections.
- Non-corrosive stainless steel 304G construction including table top frames, accessories rail, base cover and column telescopic covers.

Removable Telescopic Top Traction System





Standard Accessories



Anaesthesia Screen



Shoulder Support



Lateral Support



Knee / Lithotmic Crutches



Arm Board



Mattress 50mm

Optional Accessories



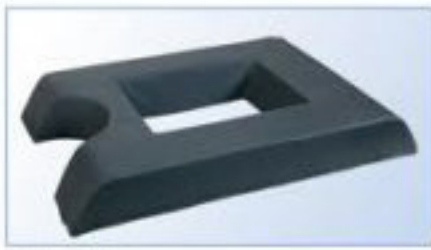
Foot Rest



Humerous Attachment



Inberger Hand Traction



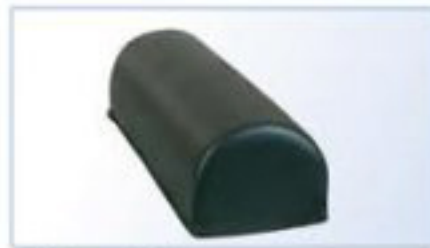
Spine Frame



Head Support



Translucent Hand Rest

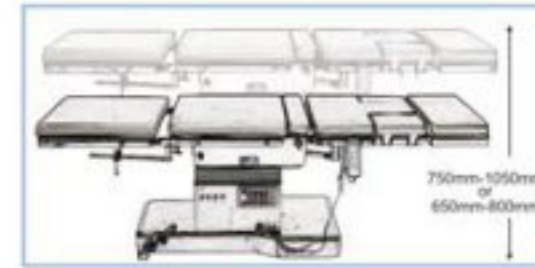


D Shape Bolster



Accessories Stand

Table Positions



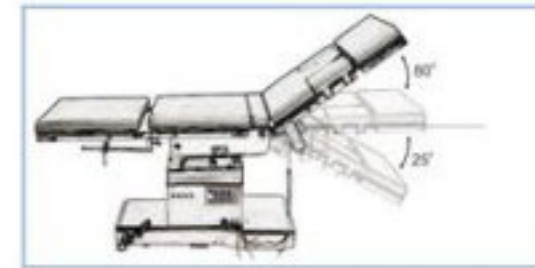
Height adjustment



Trendelenburg / Rev. Trend.



Lateral tilt left / right



Back rest (upward / downward)



Flex Reflex



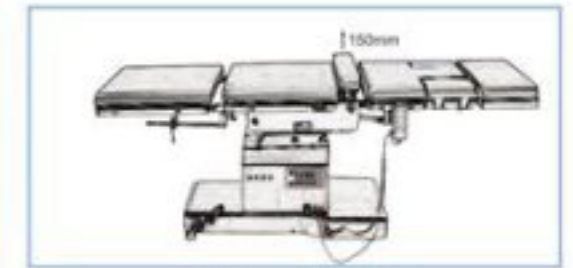
Longitudinal/ Sliding Top (Optional)



Head rest (upward / downward)



Leg rest (upward / downward)



Kidney elevator

Optional Accessories for Orthopaedic

- Orthopaedic Attachment
- Radio-Translucent Hand Operating Table with telescopic support, height adjustable
- Inberger Hand Traction Device, height adjustable
- Shoulder Surgery Attachment
- Arthroscopy Leg Holder with clamp, horizontal & vertical movement
- Wilson Frame
- Thigh Holder
- Humorous Attachment with clamp, height adjustable
- Raised Arm Board, height adjustable
- Pubis Support, horizontal & vertical movement
- Cannestra Hip Positioner, horizontal & vertical movement

Optional Accessories for Urology/Gynae

- S.S. TUR Drainage Tray with stainless steel sieve and drain hose
- Extension Side Rail
- Split Leg Section

Optional Accessories for Neurology

- Three Head Pin Mayfield Fixtrator
- Horse Shoe Shape Neuro Attachment

Major Clients



Presence across major parts of the World



Available at:

XAVIER Med Pvt. Ltd.

1-10-51/2, Road 6B, Dwarakapuram,
Dilsukhnagar, Hyderabad - 500060

www.buyxavier.com

Customer Care: 8008895680,

Service: 8008895079