

Imaging Your Imagination!

HD Color Doppler Ultrasound System

CD40



Excellent Performance

CD40 features advanced technology that gives you the ability to capture excellent images on routine or difficult exams. The innovative system architecture provides the foundation for its best-in-class capabilities. All the classic and newly invented features will take your imaging to the next level of excellence.



Novel piezoelectric materials and increased bandwidth of the CD40's transducers allow the use of a wide frequency range to capture uniformly clear images, even on the most demanding patients.



Innovative new PIH filters suppress noise in the signal to boost contrast resolution throughout the images, displaying highly improved 2D, color flow and spectral Doppler images.



The second-generation μ -scan technology greatly improves the visibility of organs and lesions with improved, high-definition contrast resolution that suppresses speckle artifacts while maintaining real tissue architecture.



Real-Time panoramic and trapezoidal imaging expand your field of view, providing additional B-mode information and anatomical references of large organs and masses for easy measurement and high diagnostic efficiency.



Konica Minolta Healthcare India provides the CD40 with compression C-xlasto elastography to support assessment of tissue elasticity. The differences in tissue responses are detected and visualized in real-time through different graphical representations, which can be particularly helpful in analyzing breast, thyroid and musculoskeletal structures.



Powerful & Versatile

- 4 probes + 1 pencil probes connectivity.
- C-XLasto - Elastography scanning.
- Live, Real time Panoramic imaging.
- Auto ES/LV trace.
- Stress Echocardiography.
- 2nd generation μ scan technology.

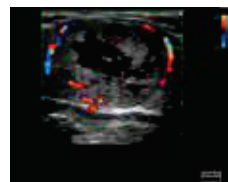
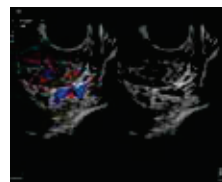
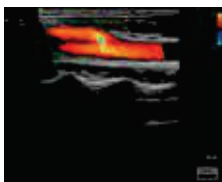


Technical Specifications: CD40

■ Imaging Mode	B, B/B, 4B, B/M, M, B/D, Color Doppler Imaging, Power Doppler Imaging, Bi-Directional Doppler, PW/ CW Doppler, Pulse Inverse THI, Real Time Dual B, Duplex, Triplex, TDI, Anatomical M Mode, 4D Color M Mode, Elastography etc.
■ Scanning Mode	Electronic Convex / Linear / Phased Array
■ Gray Scale	256
■ Display	19" Medical Grade LED Display + 10" Touch Screen
■ Probe Frequency	Broad band 4 frequency selection, Working frequency 2MHz – 15MHz
■ Probe Connector	4 (standard) and 1 Pencil Probe, Keyboard movement up & down & swivel
■ Dynamic Imaging Technology	Dynamic frequency scan
■ Gain Control	Overall Gain Control, 8 - Step TGC continuously adjustable
■ Image Reverse	Left/Right, Up/Down
■ Image Magnification	Upto 10X Smart zoom
■ Cine Loop	More than 1000 frames (Probe and Mode Dependent)
■ Image Storage	Minimum 500 GB Hard Disk for inbuilt Digital Image storage, Inbuilt CD/DVD Drive
■ Connectivity	High Speed USB, LAN Networking, DICOM 3.0, S-Video, VGA, Video, Remote print,
■ System Upgrade	Flexible System upgrade through software
■ Clinical Application	Abdominal, Vascular, Thyroid, Obs/Gynecology, MSK, Adult/Pediatric Cardiac, Urology, Neonatal Head, Small Parts, Transcranial, TEE, etc.
■ Probes	Convex / Linear / Micro Convex / Phased Array / Trans Vaginal / Transrectal / TEE, Volume Convex Transducers
■ Optional	Adult TEE Probe, Pediatric TEE Probe, Surgical (Hockey Probe), Bi-Plane Rectal Probe

High Density Broadband Probes

<p>■ SC53 Convex Probe 2 - 6 Mhz</p> 	<p>■ SL42 Linear Probe Frequency 4.5 - 15 Mhz</p> 	<p>■ SP21N Adult Phased Array Probe 2 - 4 Mhz</p> 
<p>■ SP51N Pediatric Phased Array Probe 4 - 8 Mhz</p> 	<p>■ SV63N HD Trans Vaginal Probe 4 - 11 Mhz (200°)</p> 	<p>■ VC26N Volume Convex Probe 2 - 6 Mhz</p> 



AeroSCAN
Digital Ultrasound Imaging

KONICA MINOLTA HEALTHCARE INDIA PVT. LTD.

Available at:

XAVIER Med Pvt. Ltd.

1-10-51/2, Road 6B, Dwarakapuram,
Dilsukhnagar, Hyderabad - 500060

www.buyxavier.com

Customer Care: 8008895680

Service: 8008895079