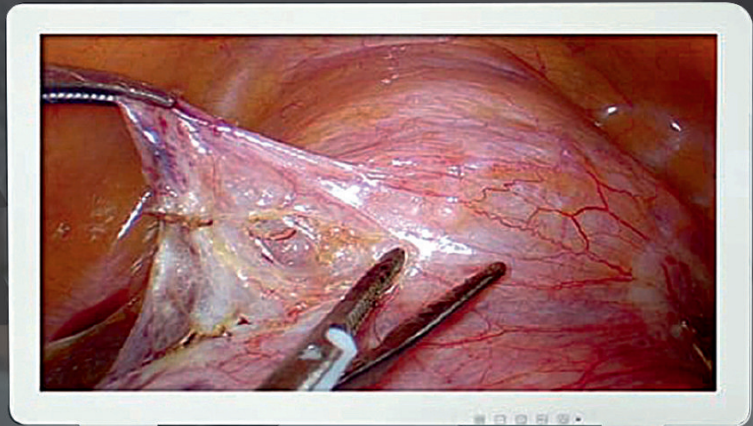


RIGID ENDOSCOPY ESSENTIAL EQUIPMENTS

SUPERLATIVE PERFORMANCE

ECONOMICAL PRICES



ENDOSCOPY CAMERAS →



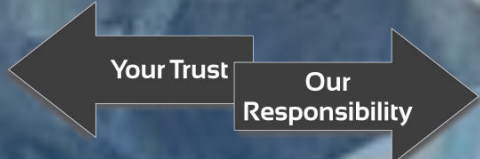
LED LIGHT SOURCES →



CO2 INSUFFLATORS →



ELECTRO SURGICAL UNITS →

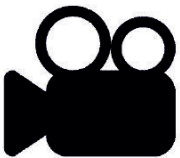


EXCLUSIVE FEATURES OF ENERTECH CAMERAS

Superior Colour Reproduction Across The Spectrum :



Video Recording And Image Capture By USB Port :



Video Recoding



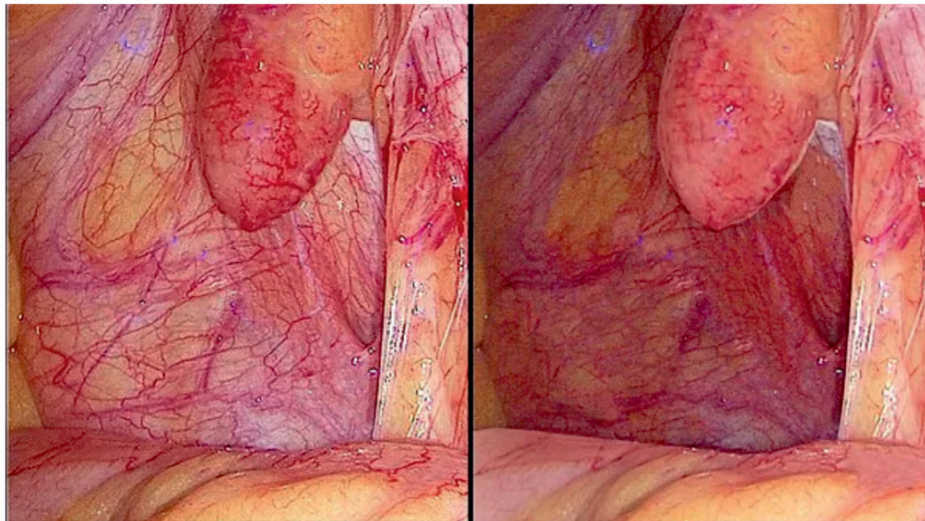
Image Capture



** Note : These USB Port Features are available in CAM 300 and CAM 500 only*

EXCLUSIVE FEATURES OF ENERTECH CAMERAS

Bigger, Wider CMOS 1/1.8" Sensor In All Full HD Cameras :

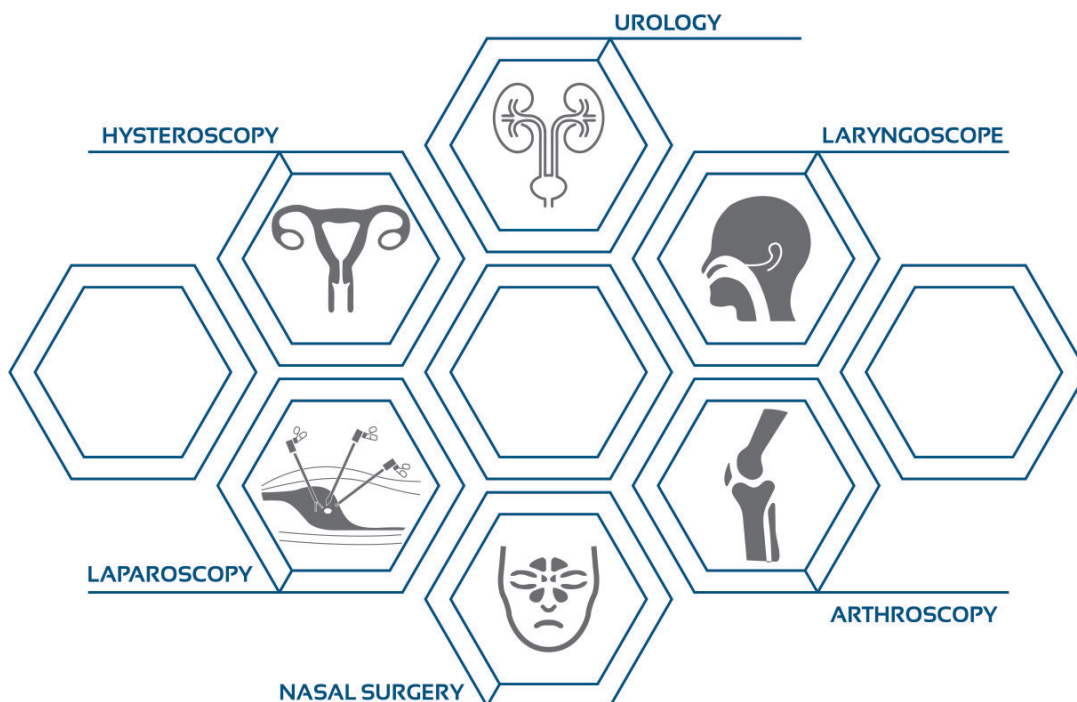


Bigger 1/1.8" Sensor
- Better details even in the deeper areas
- Brighter and Noise-free Images
- Rich and accurate colours

Smaller 1/2.8" Sensor
- Loss of details in the deeper areas
- Darker Image with noise
- Inability for colour differentiation.

Multi-Speciality Modes For Different Types Of Surgeries :

Different types of surgeries and applications can be selected from the camera menus



Cam 300 :

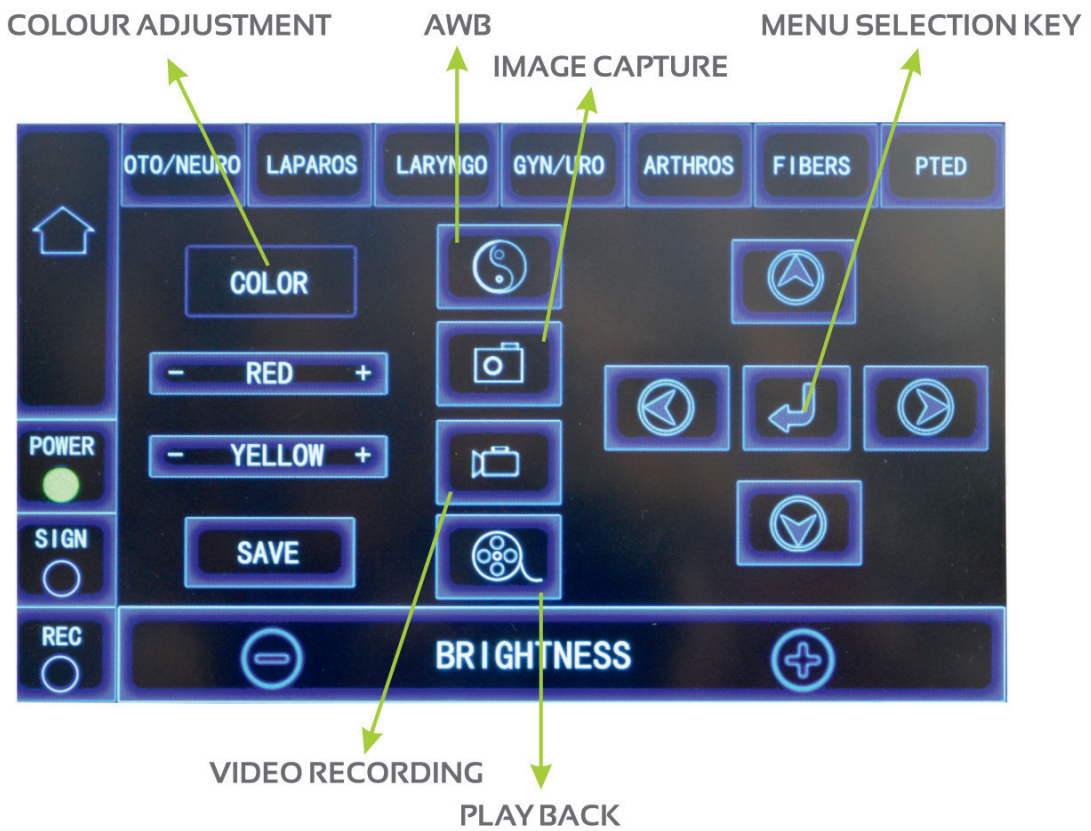
Cam - 300 Specification :

Image Sensor	1 / 1.8"
Frame Rate	60 FPS @ 1080 P
Sensor Resolution	2.4 megapixel 1080 P
Focal Length of lens	18 mm - 28 mm
Gain Control (AGC)	Yes
Brightness Control	0-20 Steps (Adjust According to light source intensity)
Settings	On Screen Display (OSD)
No. of Buttons on Head	Four (W.B., Freeze, Brightness increase & Decrease)
Out put	HDMI, DVI, CVBS, SDI out
Sharpness Adjustment	Yes
Antie Morie	Yes
White Balance	PUSH LOCK
Camera Cable Length	3 Meter Ultra Soft Silicon Cable
Power Cable Length	2.5 Meter
Supported Endoscope	Rigid Endoscope / Flexible Endoscope
Supported Light Source	Works Best with LED Light Source
Power	230 V. A.C.
Dimension	W.H.D. 350mm 140mm 350mm
Weight	5.5 Kg.
Recording Resolution	1080P Full HD @ 60FpS.
Snap Short Resolution	1920 X 1080 Pixels
Recording Mode	Via USB, Pen Drive
Digital Zoom	IX - 10X

Cam 300 :



Multi-Speciality Software Suit :

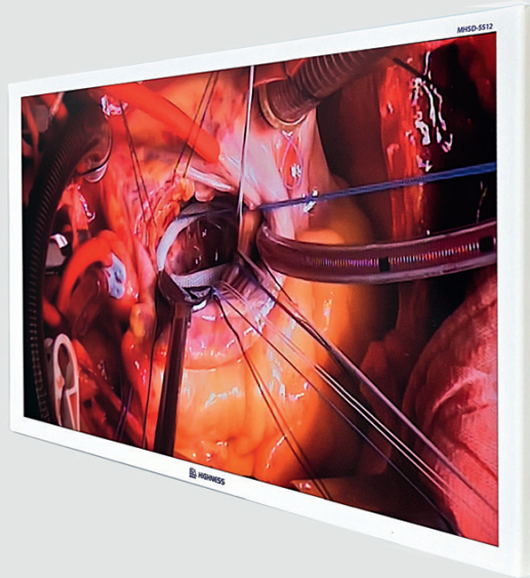


Crystal Clear Images Which Are Sharp And Detailed :

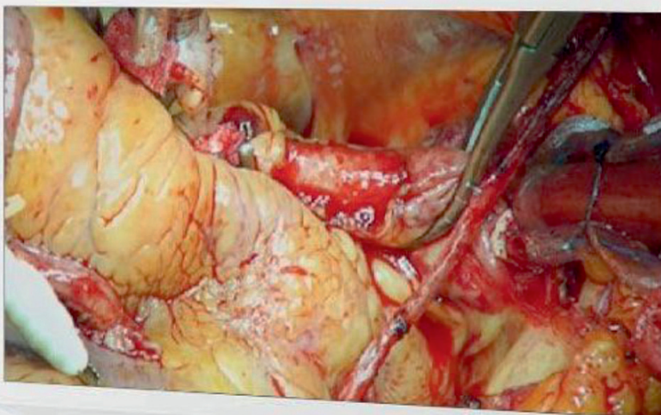
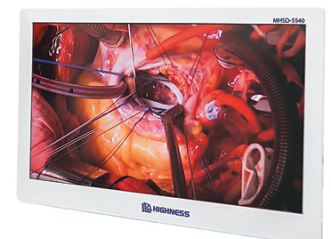
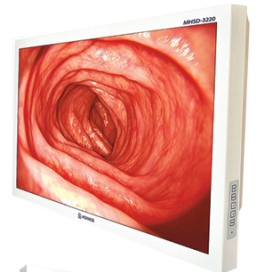
Full HD 55 inches
Medical grade Surgical Display
Model: MHSD-5512



- Colour Differentiation
- Deeper Detailing
- Sharp Focus



Available Display Sizes
27", 32", 43", 55"



**Superior Digital Signal Processing (DSP)
Technology**

LED LIGHT SOURCE



Display : Graphical LCD Display.
Life Span of LED : @ 50000 Hours.
Power : 100 watts.
Light Guide Connection : Storz Type.
Intensity Control : 0 to 100 %.
Colour Temperature : 6000° K.
Operation Temperature : 10° C to 40° C.
Operation Humidity : 10% to 90%.
Dimension (WxHxD) : 290mm X 125mm X 305mm.
Frequency : 50 HZ.
Voltage : 170 V - 270 VAC (110 VAC optional).
Weight : 3.5 kg.

CO2 INSUFFLATOR

Insufflation Pressure : 0 - 30 mm Hg.
Dimension (W x H x D) : 290 mm x 110 mm x 300 mm.
Weight : 4 Kg.
Gas : CO2 (Medical) + Air.
Gas Connection : UNF 7 / 16".
Power Consumption : 15 Watts Maximum.
Input Pressure Minimum : 1 Bar.
Input Pressure Maximum : 10 Bar.
Output Connection : 4 to 5 mm ID Tube.
Flow Rate Setting : 1 to 30 Ltr / min.
Keyboard : Feature Touch.
Gas Warmer : Builtin.
Manufactured and tested : IEC 601-1 / EN 60601-1.



VESSEL SEALER WITH SURGICAL DIATHERMY



Model: MAXSEAL
Touch Screen Operation.
Patient Plate conductivity monitoring system (PP-CMS.).
Accessories contact detection during Plug-in and operation.
Modes-1 pure cut, 1 precise cut, 5 blend, 3 Endo Cut, 2 Spray, 2 Fulgurate, 1 Dessicate.
1 Bi-Cut, 2 Bi-Coag and 1 Seal Mode.
100 Programs Memory
Interface: Touch screen.
Dimension (WxHxD): 300 mm x 150 mm x 340 mm.
Weight: 5.5 kg.
Input Supply Voltage: 230 VAC + 15%@ 50/60Hz
(110 V optional).

www.buyxavier.com



XAVIER MED PVT. LTD.

Reg Office: 1-10-51/2, Road-6B, Dwarakapuram, DSNR, Hyderabad-500060

Mkt Office: 16-2-741/9, Plot No.57, Andhra Bank Colony,
Rishi Arcade, Moosarambagh, Hyderabad-500036.

Customer Care: 8008895680, 9849466520, 8008895079