



Export to More than
50
Countries

The best-in-class
Operating Room Equipments Under One Roof...



XcellLance Medical Technologies Pvt. Ltd.

Available at:

XAVIER Med Pvt. Ltd.
1-10-51/2, Road 6B, Dwarakapuram,
Dilsukhnagar, Hyderabad - 500060
www.buyxavier.com
Customer Care: 8008895680,
Service: 8008895079

XMT7MKPD 08 rev: 00 OCT/18 Copyright by XMTPL. We reserve the right to make alterations



Shalya Orbit
Ceiling Pendant Systems



STABLE WORKING • RIGID AND RELIABLE • FLEXIBLE OPTIONS
Complete Operating Room Solution

Shalya Orbit

- **Wide range of solutions**

We provide variety of arm lengths, ranging from 600mm to 1200mm which can be supplied in a combination from individual system to a complex system as per customer requirements.

- **Customized options**

Our pendants can be equipped with various customized solutions including Surgical, Endoscopy and Anaesthesia in OR, ICU and patient ward solutions including Gas, Equipments and Lighting.

- **Swift manoeuvre**

Single and Dual Arms system with an option of electrical lift provides 330° to 340° depending on configuration and type of system



STABLE WORKING • RIGID AND RELIABLE • FLEXIBLE OPTIONS



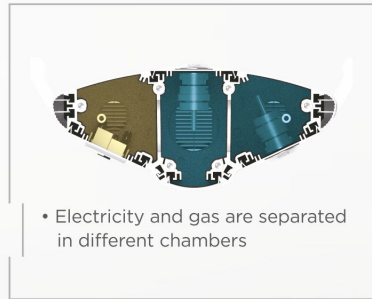
Shalya Orbit

Complete Range of Pendant System



• Product Feature

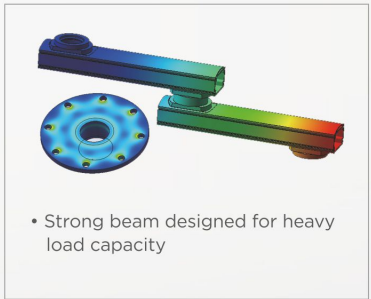
- Refitex Medical Hose
- Shelves / drawer with 80kg load capacity available for EU and US rails version
- Pneumatic brake available (Optional)
- Hybrid pendant with integrated swing arm and spring arm to hold display



• Electricity and gas are separated in different chambers



• Specifically designed drawer with pneumatic low-noise locking system



• Strong beam designed for heavy load capacity



• Monitor holders with swivel arm
More safe and flexible



• Gas Outlet and Accessories

Types of Ceiling Pendant Models



Endo-Hybrid Pendant



Horizontal Anaesthesia Pendant



Surgical Pendant



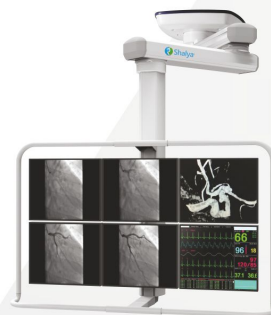
Straight Pendant



Motorized Pendant



Combination Pendant



Display Pendant



Shalya Orbit

Surgical, Endoscopy and Anaesthesia in OR, ICU and patient ward solutions including Gas, Equipments and Lighting