

ENERTECH CAMERAS

CAM - 400



Cam - 400 Specification :

Image Sensor	1 / 1.8"
Frame Rate	60 FPS @ 1080 P
Sensor Resolution	2.4 megapixel 1080 P
Focal Length of lens	18 mm - 28 mm
Gain Control (AGC)	Yes
Brightness Control	0-20 Steps (Adjust According to light source intensity)
Settings	On Screen Display (OSD)
No. of Buttons on Head	Four (W.B., Freeze, Brightness increase & Decrease)
Out put	HDMI, DVI, CVBS, SDI out
Sharpness Adjustment	Yes
Antie Morie	Yes
White Balance	PUSH LOCK
Camera Cable Length	3 Meter Ultra Silicon Cable
Power Cable Length	2.5 Meter
Supported Endoscope	Rigid Endoscope / Flexible Endoscope
Supported Light Source	Works Best with LED Light Source
Power	230 V. A.C.
Dimension	W.H.D. 290mm 125mm 305mm
Weight	3.5 Kg.
Digital Zoom	IX - 10X

DIFFERENCE BETWEEN CAM 500 AND CAM 400

CAM
500

- Black Camera Head
- Video Recording by USB - YES
- Image Capture - YES

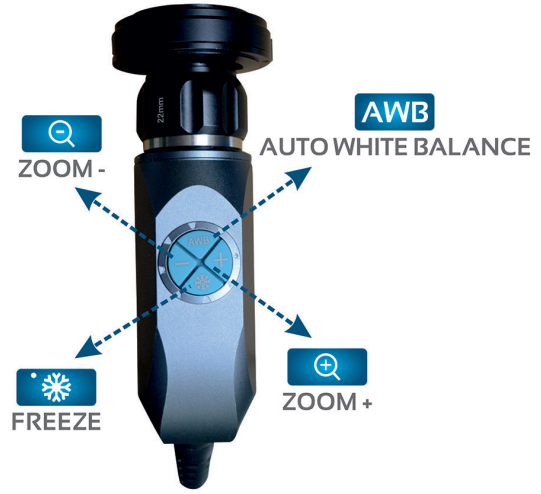
CAM
400

- Grey Camera Head
- Video Recording - NOT AVAILABLE
- Image Capture - NOT AVAILABLE

CAM 500 Camera Head :

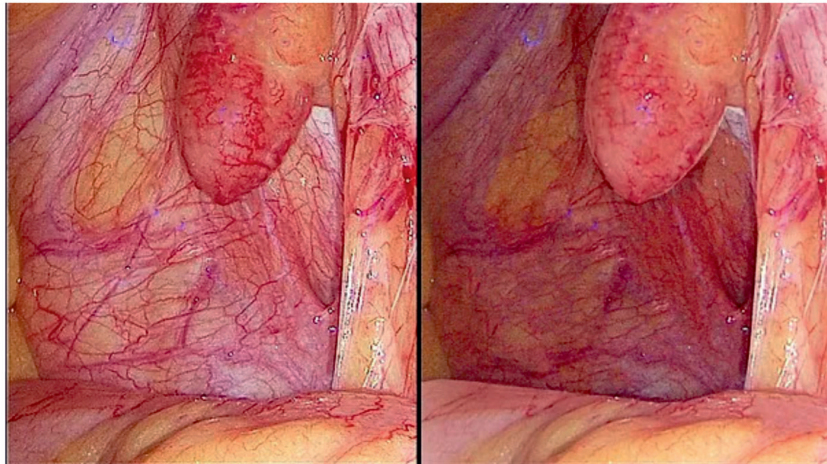


CAM 400 Camera Head :



EXCLUSIVE FEATURES OF ENERTECH CAMERAS

Bigger, Wider CMOS 1/1.8" Sensor In All Full HD Cameras :

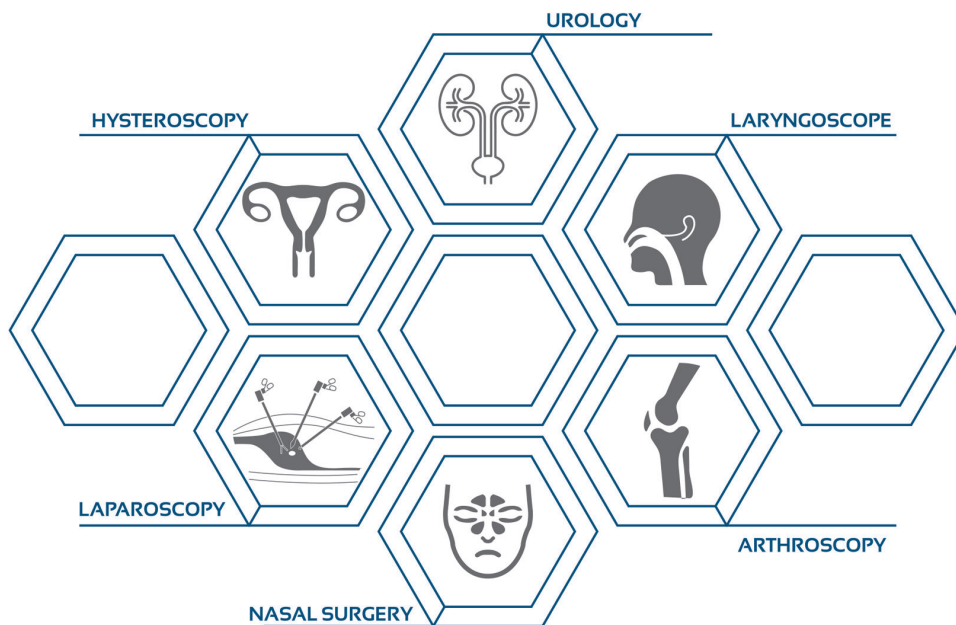


Bigger 1/1.8" Sensor
 - Better details even in the deeper areas
 - Brighter and Noise-free Images
 - Rich and accurate colours

Smaller 1/2.8" Sensor
 - Loss of details in the deeper areas
 - Darker Image with noise
 - Inability for colour differentiation.

Multi-Speciality Modes For Different Types Of Surgeries :

Different types of surgeries and applications can be selected from the camera menus



Available at:
XAVIER Med Pvt. Ltd.
 1-10-51/2, Road 6B, Dwarakapuram, Dilsukhnagar, Hyd.
www.buyxavier.com
 Customer Care: 8008895680, Service: 8008895079