



Lumens Medical Pvt. Ltd.  
*Life Enhancing Technology*



# HD Endoscope Camera

with Optional inbuilt recorder



**LM9-HD**

# LM9-HD



Lumens Medical Pvt. Ltd.  
*Life Enhancing Technology*

## Full HD Laparoscopy & Endoscopy Camera



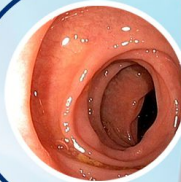
### 5x Digital Zoom Lens

One touch 5x digital zoom and High Power magnification for detailed inspection and in-depth analysis.



### One-Click Recording

Record Full HD videos and images directly into USB drive plugged into control unit by one click record button on control unit or remote



### High Colour Accuracy

Achieve high color accuracy even in challenging condition with special 3 layer colour accuracy filter on camera sensor



### Full HD 1080p Sony Sensor

Latest 1/2" Sony Sensor with high sensitivity to provide exceptional images even at low intensity of light source with wider field of view as compared to conventional 1/2.8" CMOS



### Low delay smooth 60fps live imaging

Fast image with 60 frames per second to get zero delay video necessary for surgical purpose



## CONTROL UNIT ANATOMY



### Anti Glare 4K Optics for HDR

Latest 4K Optical glass lens with anti-reflection coating to produce noise-free images with sharper details.



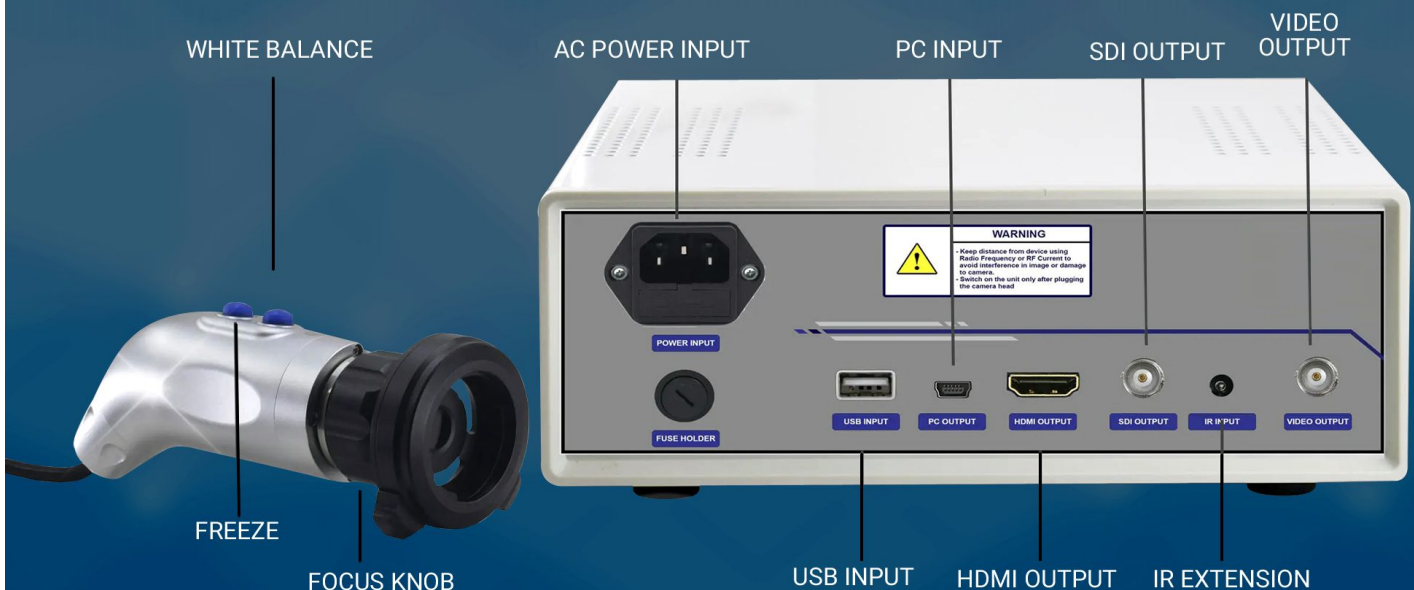
### PC Input

Directly connect the control Unit to PC / Laptop and view the video in software provided with camera.



### Full HD Recording & Image

Record Full HD Videos at 60fps with just one press button on front panel directly into USB drive.



# LM9-HD

## SPECIFICATIONS

Model	OPTI VIEW-HD	
Signal System	PAL	NTSC
Image Sensor	1/1.9" Sony CMOS Full HD 1080p Sensor	
Total Pixels	2000 (H) x 1241 (V) approx. 2.48M pixels	
Unit Cell Size	3.75 $\mu\text{m}$ (H) x 3.75 $\mu\text{m}$ (V)	
Scanning Frequency	H: 15.625 KHz / V: 50 Hz	H: 15.734 KHz / V: 59.94 Hz
Frame Rate	50 Fps @ 1080p	60 Fps @ 1080p
Sensor Resolution	2.13 Megapixel 1080p	
Effective Pixels	1945 (H) x 1097 (V) approx. 2.13M pixels	
Focal Length of Lens	22 mm. (ENT) / 28 mm. (Laparoscopy)	
Gain Control (AGC)	0 - 10 Steps	
Brightness Control	0 - 20 Steps (Adjust according to light source intensity)	
Output	1 HDMI , 1 3G-SDI	
Input	1 USB Input ( Upto 128 GB Pen Drive ) 1 PC Input ( Windows )	
Recording Resolution	1080p Full HD @ 60 fps	
Snapshot Resolution	1920 x 1080 Pixels	
Digital Zoom	1x- 10x	
Recording Mode	Via USB Pen Drive	
Min. System Requirement for PC	OS : Windows 7,8,10 , Ram : 16 Gb , Intel i5 / i7 , Memory : 512 Gb , Graphics: 2 Gb	
Sharpness	0-10	
Color	0-10	
White Balance	PUSH LOCK	
Camera Cable Length	3 Meters Ultra Soft Silicon Cable	
HDMI Cable Length	2 Meters Ultra Slim	
Power Cable Length	1 Meter	
Supported Endoscope	Rigid Endoscopes / Flexible Endoscope (Optional)	
Connector	Push Pull Type	
Power Voltage	12VDC (Camera Head) , AC110V-240V (Control Unit)	
Power Consumption	Max. 2W / 170mA	
Operating Temperature	-10°C ~ +50°C	
Operating Humidity	30% ~ 80% RH	
Dimensions	275 (L) x 220 (W) x 80 (H) mm. (Control Unit) , $\varnothing$ 38 mm. x 97.7 mm. (Camera Head)	
Weight (Net)	Approx. 1800 g. ( Control Unit ) , Approx. 150 g. ( Camera Head without Cable and lens )	



**Lumens Medical Pvt. Ltd.**

*Life Enhancing Technology*

An ISO 9001, ISO - 13485, CE, WHO cGMP, ISO -1400 Certified Company

# 2-24-113/3/B/NR, Laxmi Narayana Nagar, Uppal, Hyderabad - 500039  
Telangana, India. Tel: 9849466520, 7997192056, 6309995893

Available at:

**XAVIER MED PVT. LTD.**

1-10-51/2, Road 6B, Dwarakapuram,  
Dilsukhnagar, Hyderabad - 500060

[www.buyxavier.com](http://www.buyxavier.com)

**Customer Care: 8008895680,**

**Service: 8008895079**