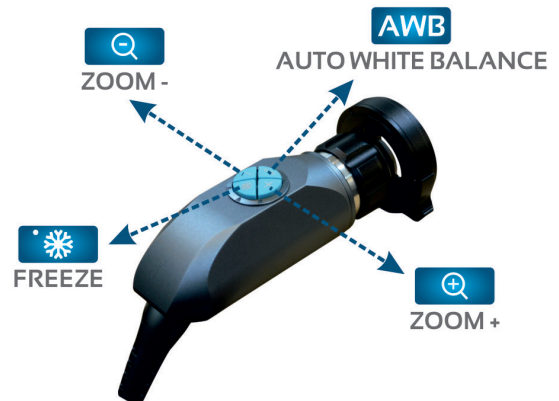


ENERTECH CAMERAS

CAM - 200

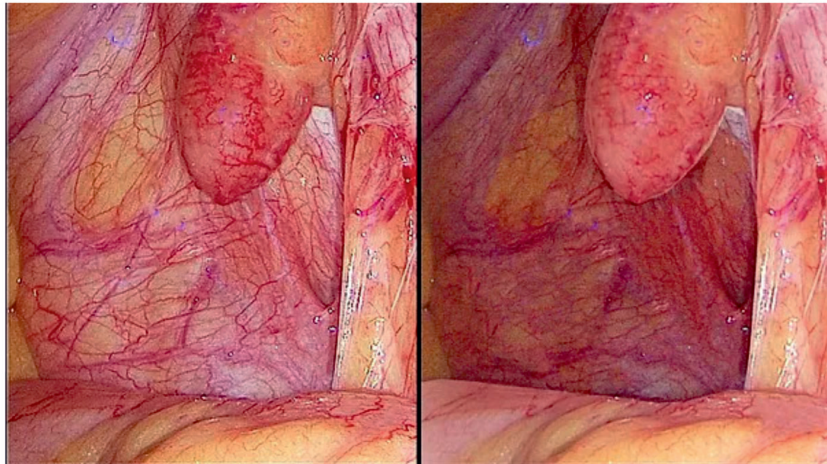


Specifications

Image Sensor	1 / 1.8"
Frame Rate	60 FPS @ 1080 P
Sensor Resolution	2.4 megapixel 1080 P
Focal Length of lens	18 mm - 28 mm Lens
Gain Control (AGC)	Yes
Brightness Control	0-20 Steps (Adjust According to light source intensity)
Settings	On Screen Display (OSD)
No. of Buttons on Head	Four (W.B., Freeze, Zoom+, Zoom-, increase & Decrease)
Out put	HDMI, DVI, CVBS, SDI
Sharpness Adjustment	Yes
Antie Morie	Yes
White Balance	PUSH LOCK
Camera Cable Length	3 Meter Ultra Soft Silicon Cable
Power Cable Length	2.5 Meter
Supported Endoscope	Rigid Endoscope / Flexible Endoscope
Supported Light Source	Works Best with LED Light Source
Power	230 V. A.C.
Dimension	W.H.D. 290mm 125mm 305mm
Weight	2 Kg.
Digital Zoom	IX - 10X

EXCLUSIVE FEATURES OF ENERTECH CAMERAS

Bigger, Wider CMOS 1/1.8" Sensor In All Full HD Cameras :



Bigger 1/1.8" Sensor

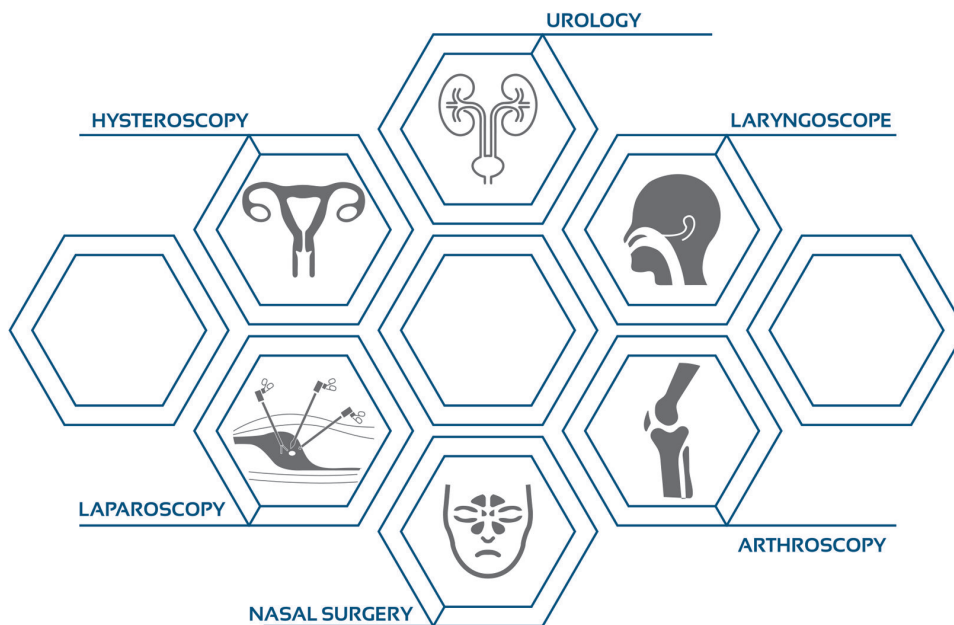
- Better details even in the deeper areas
- Brighter and Noise-free Images
- Rich and accurate colours

Smaller 1/2.8" Sensor

- Loss of details in the deeper areas
- Darker Image with noise
- Inability for colour differentiation.

Multi-Speciality Modes For Different Types Of Surgeries :

Different types of surgeries and applications can be selected from the camera menus



Available at:

XAVIER Med Pvt. Ltd.

1-10-51/2, Road 6B, Dwarakapuram, Dilsukhnagar, Hyd.

www.buyxavier.com

Customer Care: 8008895680, Service: 8008895079