

HD Endoscopy Camera 6698

A professional 3Chip full high definition camera



*Optical coupler is option, the camera head has a standard C-mount interface.

Cymo HD endoscopy camera HD6698 is the latest version of the high definition endoscopy camera, which delivers the clearest, sharpest picture. With the native progressive scan the HD6698 provides the sharpest detail with incomparable natural color rendition at the highest spatial and temporal resolution. Even the finest variations in tissue structures are distinguishable.

HD 6698 will definitely enhance the capabilities of surgeons performing minimally invasive procedures.

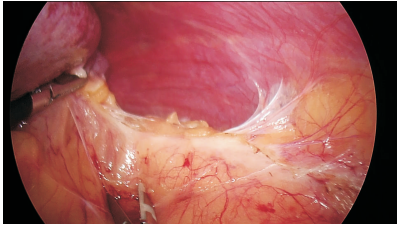
KEY FEATURES:

- ■ ■ 3 1/3" 16:9 image sensors with more than 6Mega effective pixels in total
- ■ ■ High sensitivity requires less light from illumination
- ■ ■ New image enhancement functions on clarity and color
- ■ ■ High interference immunity from electrosurgery
- ■ ■ Flexible filters for using with fiber flexible scope
- ■ ■ Full digital chain achieved on DVI-D, HDMI⁽¹⁾, or 3G-SDI digital output
- ■ ■ Up to 2,5x digital zoom function and freeze function
- ■ ■ Mirror, flip, rotation function
- ■ ■ Full HD resolution video recording and image capturing (optional)

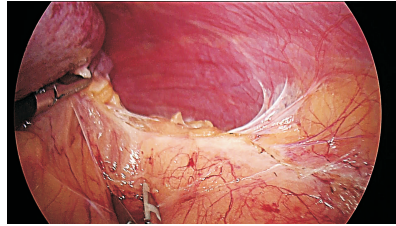
Note: ⁽¹⁾ HDMI support via included adapter.

Advanced Image Enhancement

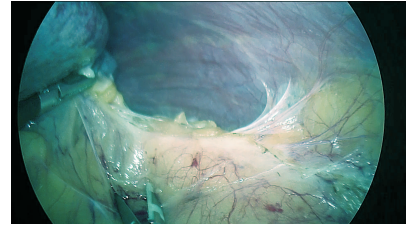
Original Image



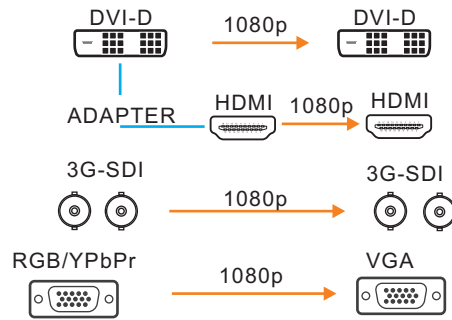
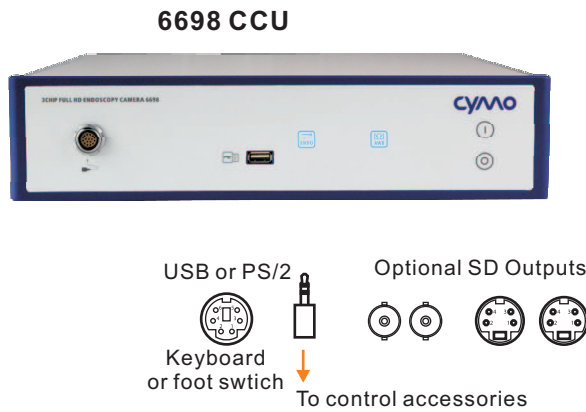
Clarity Enhancement



Color Enhancement



Camera Control Unit (CCU) Outputs:



TECHNICAL DATA

Video system	50Hz/ 60Hz Selectable
Image sensor	3 x 1/3" CHIP
Scanning system	Progressive
Effective pixels	3 x 1920(H)×1080(V)
Resolution	> 1000TV Lines
Signal-to-noise ratio	≥ 56dB
Sensitivity	F11 standard(2000lux) 50Hz
User settings	5
Frame rate	50p (EU) / 59.94p (US)
Output signal	2x DVI-D or HDMI 2x Digital 3G-SDI 1x Analog RGB or Y/Pb/Pr 2xS-video on Mini-Din 4 2xComposite Video
Advanced settings	By On Screen Display (OSD) Rs232 (on request)
Environment	0°C - +40°C temperature less than 90% relative humidity
Classification	CE Class I / BF

CAMERA HEAD

Dimensions (W×H×D)	34 × 42× 58 mm
Weight	90 g
Lens connection	C-mount
Cable length	3 meters
Protection	Soakable, IPX7
Control buttons	3

CONTROL UNIT

Dimensions (W×H×D)	325 × 74 × 365 mm
Weight	5.1 kg
Protection class	IP20
Line voltage	100-240VAC @ 50-60 Hz
Fuse	2 × T 1.0 A E / 250V (IEC 127)
Power tested acc.To	UL2601-1, EN60601-1, IEC60601-1-2

ORDERING DATA

6698.02.02	6698 camera head
6698.02.01	6698 Control Unit
6698.12.02	6698 Control Unit with recording option

Specifications, design and accessories are subject to change without any notice or obligation on the part of the manufacturer.

6698.501.P02

Copyright by Cymo B.V.

Printed in the Netherlands

06/2015 No.6698.501

Available at:

XAVIER Med Pvt. Ltd.

1-10-51/2, Road 6B, Dwarakapuram, Dilukhnagar, Hyderabad - 500060

www.buyxavier.com

Customer Care: 8008895680, Service: 8008895079